



BF 880 WIFI

**beurer**  
wellbeing

## BF 880 WIFI

Diagnostic bathroom scale WIFI / *Bluetooth*®



With "beurer HealthManager Pro" app for downloading: Analysis records and graphical evaluations of body values



Magic display: only appears during measurement



Quick & easy: *Bluetooth*® for initial set-up / WIFI for automatic data transfer

Automatic synchronisation: the data is automatically uploaded via WIFI each time you weigh yourself

Includes buttons for use without the app

With titanium-coated stainless steel electrodes

Weighing surface made of safety glass: 30 x 30 cm

Magic LED (digit height: 28 mm)

Calculates body weight, body fat, muscle percentage, BMI; other values via the app (metabolic age, body water, BMR/ AMR calorie display, bone mineral mass)

5 activity levels

8 user memories with automatic user recognition

Change over kg/lb/st

Capacity: 180 kg

Graduation: 0.1 % for body fat and muscle percentage / 100 g for body weight

Overload indication

Automatic switch-on and switch-off function

3 x AA batteries included

Product measurements (LxWxH): 30 x 30 x 2.7 cm

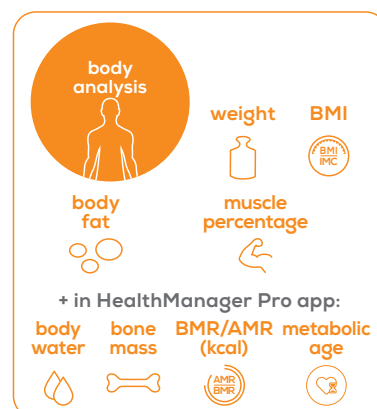
Product weight: ca. 1.7 kg

5 year guarantee

Sales unit: 3 / Shipping carton: -

EAN No.: 4211125760083

Item No.: 760.08



760.08\_BF880\_2022-04-11\_01\_DS\_EN\_BEU Subject to errors and changes

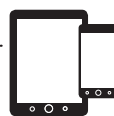
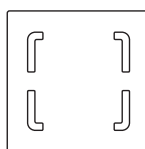
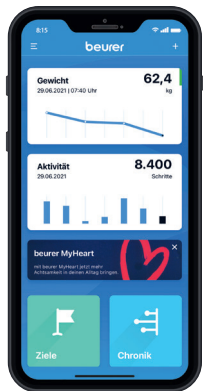
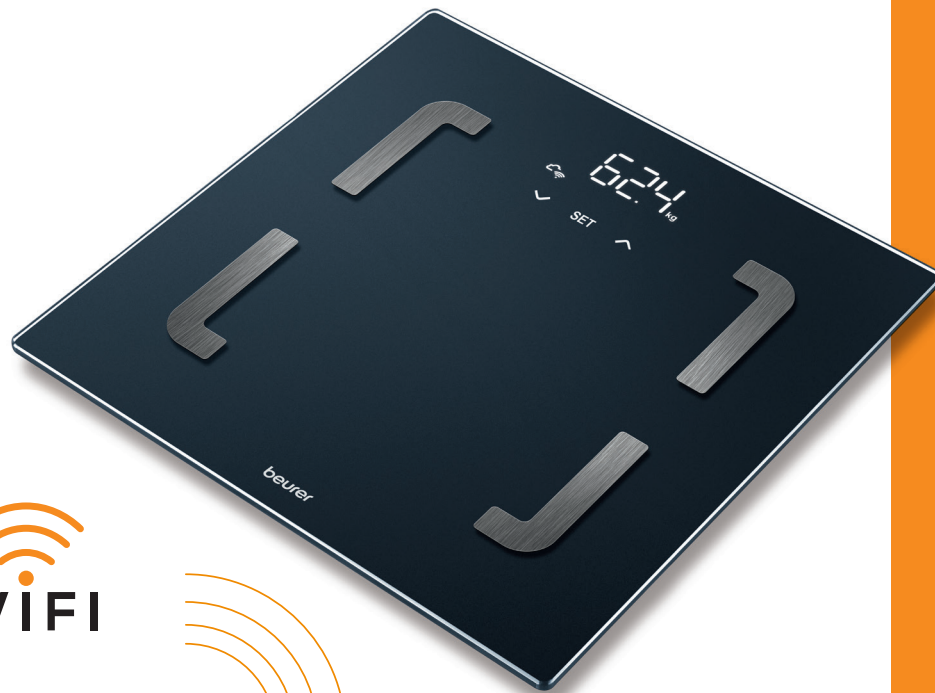


BF 880 WIFI

**beurer**  
wellbeing

**BF 880 WIFI**

Diagnostic bathroom scale WIFI / *Bluetooth*®



Innovative networking between smartphone and scale - keep track of your measurements and body data at home and on the move. Easily synchronised with your smartphone via *Bluetooth*® / WIFI



• iOS ≥ 14.0  
• Android™ ≥ 8.0  
• *Bluetooth*® ≥ 4.2



List of supported devices  
Liste der unterstützten Geräte  
Liste des équipement pris en charge  
Lista de los equipo compatibles  
Elenco degli attrezzatura supportati

760.08\_BF880\_2022-04-11\_01\_DS\_EN\_BEU Subject to errors and changes

The *Bluetooth*® word mark and logos are registered trademarks owned by *Bluetooth* SIG, Inc. and any use of such marks by Beurer GmbH is under license. Other trademarks and trade names are those of their respective owners.

Apple and the Apple logo are trademarks of Apple Inc., registered in the U.S. and other countries. App Store is a service mark of Apple Inc., registered in the U.S. and other countries.

Google Play and the Google Play logo are trademarks of Google LLC.

Android is a trademark of Google LLC.